

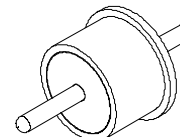
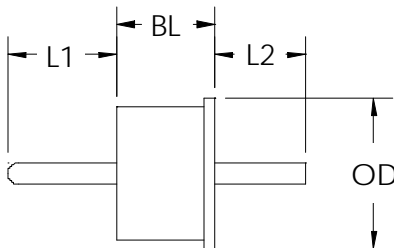


39 Souhegan Street - P.O. Box 269, Wilton, New Hampshire 03086

TEL (603) 654-2002 FAX (603) 654-2533

email: sales@shp-seals.com - website: www.shp-seals.com

**HERMETIC FEEDTHRU
PRECISION, HIGH-FREQUENCY**



ALUMINUM COMPATIBLE

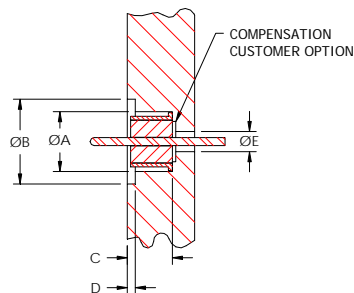
Designed specifically for use in aluminum housings, our feedthrus will provide highly reliable hermetic sealing in cyclic military and processing temperature environments, when installed in accordance with recommended application data. Our feedthrus will also minimize assembly time and enhance solder joint quality. Max leak rate 1×10^{-8} cc/sec @ 1 atm (He).

STANDARD SEALS (3)										
PART NO.				OTHER DIMENSIONS			f_c	MATERIAL		
SERIES	L1 (1) $\pm .005$	L2 (1) $\pm .003$	PLATING CODE (2)	OD $\pm .001$	BL $\pm .001$	PIN DIA. $\pm .0005$	GHz	GLASS Corning or Equiv.	FERRULE & PIN	
50 Ω										
SHP7609	xxxR	xxx	01	.076	.055	.009	65	7070	ASTM-F15	
SHP7609	029R	xxx	01	.076	.055	.009	65			
SHP7609	029R	026R	01	.076	.055	.009	65			
SHP86B12	xxxR	xxx	01	.086	.055	.012	49			
SHP86B12	040R	xxx	01	.086	.055	.012	49			
SHP86B12	040R	029R	01	.086	.055	.012	49			

Example Part No: SHP7609-029R-026R-01

APPLICATION DATA

RECEPTACLE CONFIGURATION						
					AIR	TFE
SERIES	A $\pm .001$	B $\pm .002$	C $\pm .001$	D $\pm .002$	E $\pm .001$	
SHP7609	.079	.114	.058	.012	.021	.031
SHP86B12	.089	.125	.058	.012	.028	.041



- NOTES: (1) R indicates radius. Omit R for straight-cut pin.
 (2) 50 microinches minimum GOLD per MIL-G-45204, Type III, Grade A over 100-200 microinches NICKEL per MIL-C-26074. Plating thickness is measured on pin.
 (3) See Bulletin 200 for solder preforms.

All dimensions are inches.